



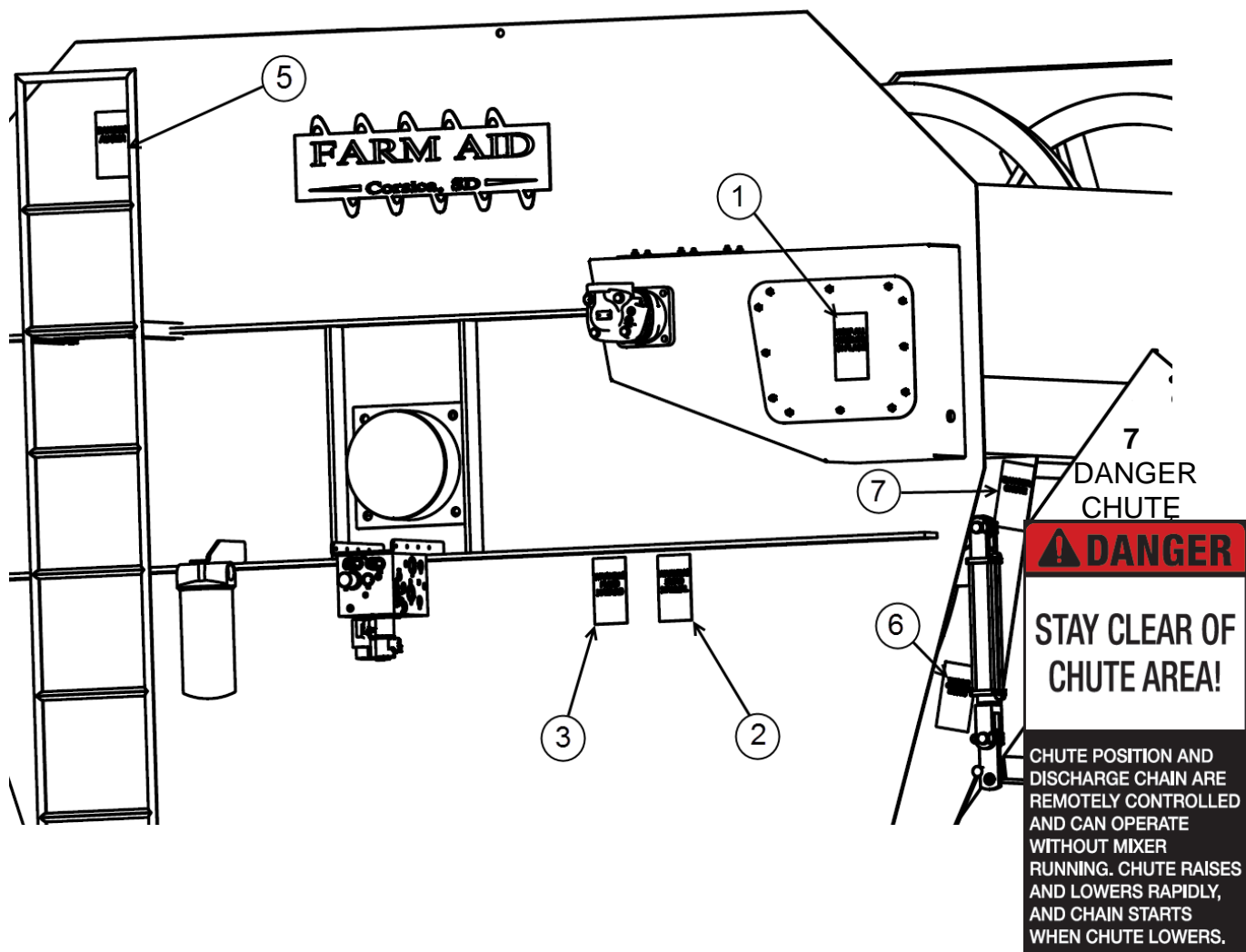
# 680 Truck Mount Parts Manual

Revised 2020-03-06



# Table of Contents

Page	Content
1	SAFETY LABELS, FRONT
2	SAFETY LABELS, BEHIND SHEILDS
3	SAFETY LABELS, REAR
4	SAFETY LABEL, LOW SIDE
5	680 TRUCK HYDRAULICS
6	680 FRONT AND HIGH SIDE EXTERNAL PARTS
7	REAR DRIVE
8	ELEVATOR
9	ELEVATOR CHAIN AND HINGED MAGNET
10	LEFT SPIRAL ASSY
11	REAR EXTERNAL
12	POLY LINERS, LEFT



**1**  
WARNING  
SHIELDS



**2**  
WARNING  
READ MANUAL



**3**  
WARNING  
HIGH PRESSURE

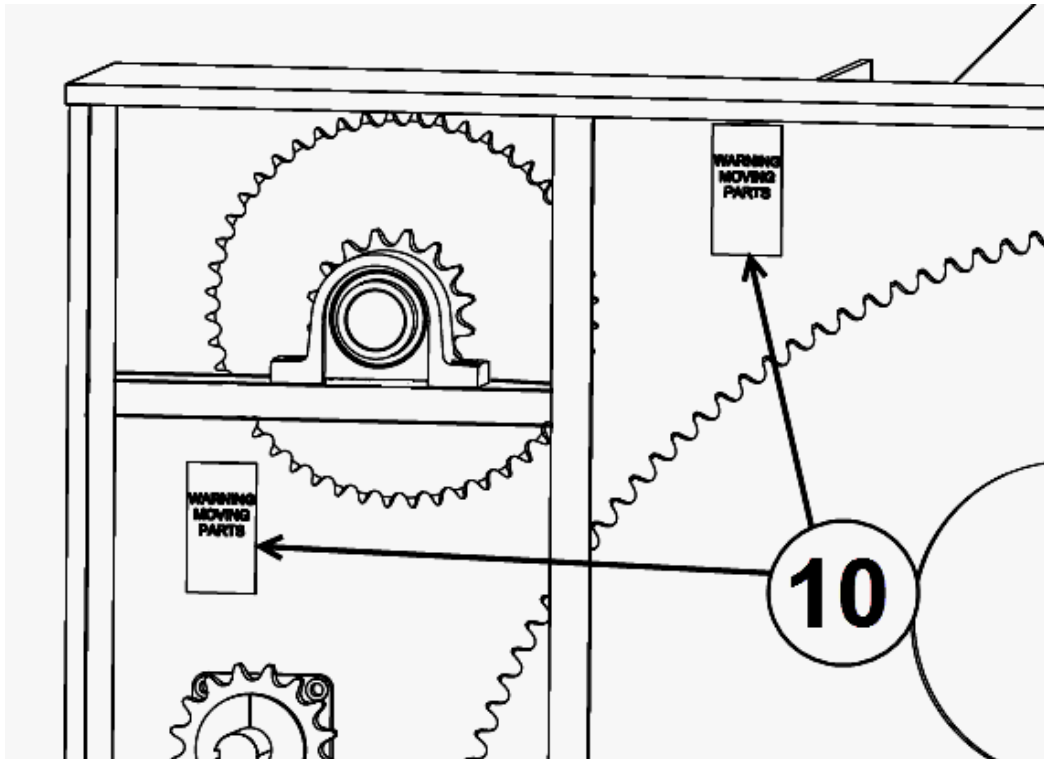


**5**  
DANGER  
AUGER



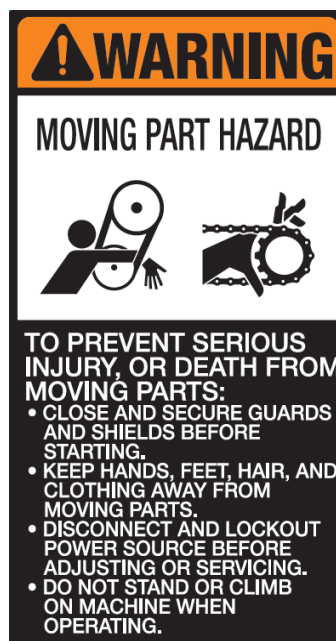
**6**  
WARNING  
CRUSHING

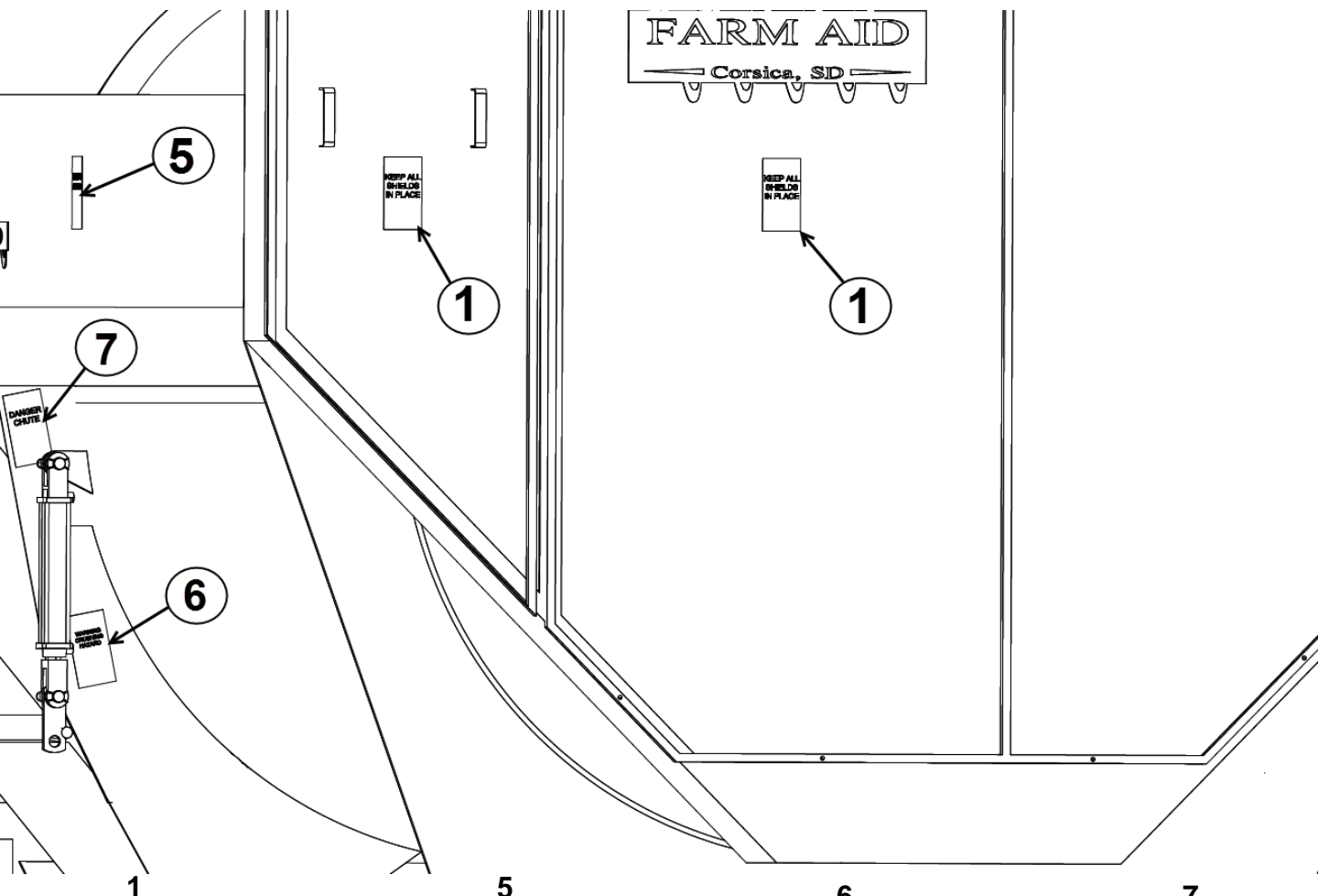




**REAR**  
 SHOWN WITH BOTH DOORS OPEN/REMOVED

**10**  
**WARNING**  
**MOVING PARTS**





1  
WARNING  
SHEILDS



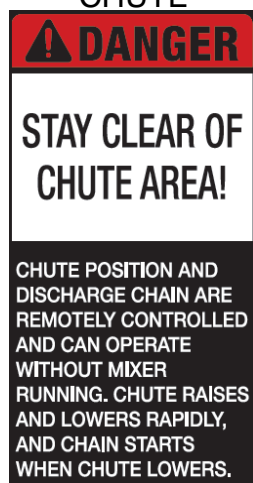
5  
DANGER  
AUGER

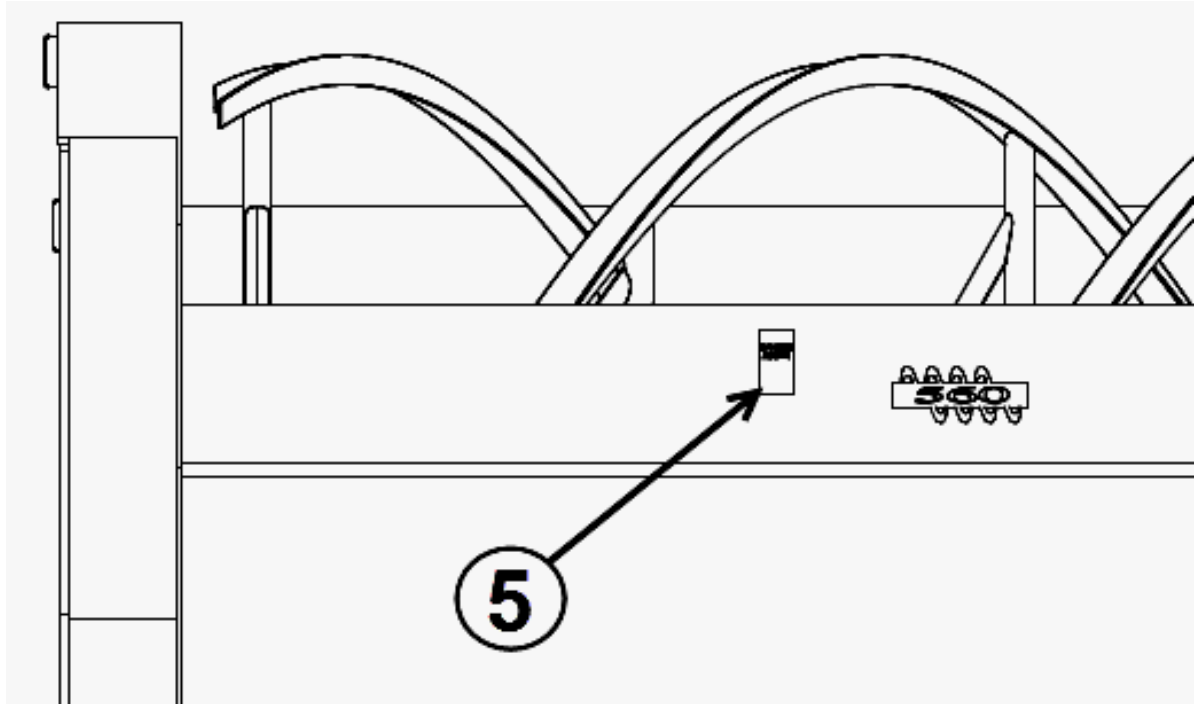


6  
WARNING  
CRUSHING



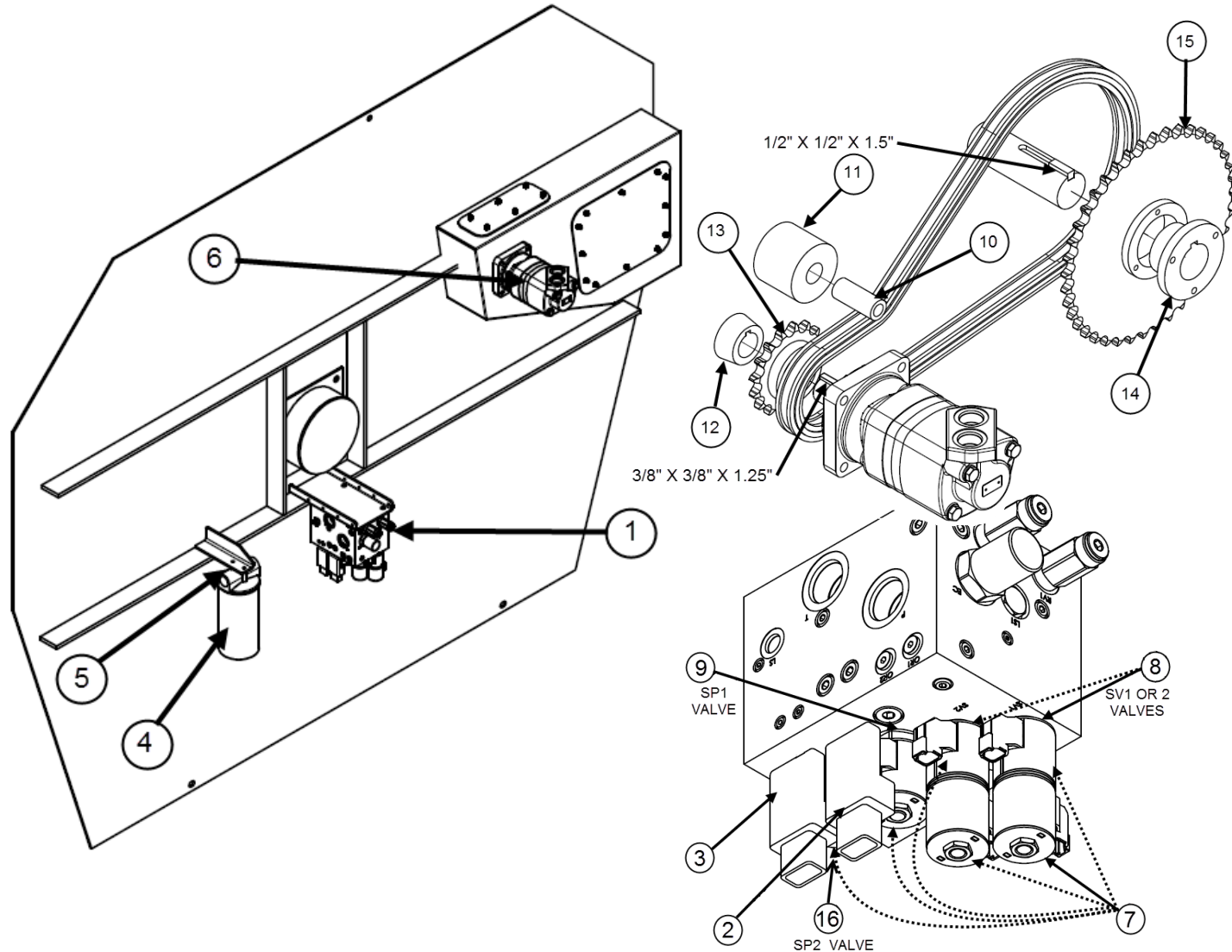
7  
DANGER  
CHUTE





**5**  
**DANGER**  
**AUGER**

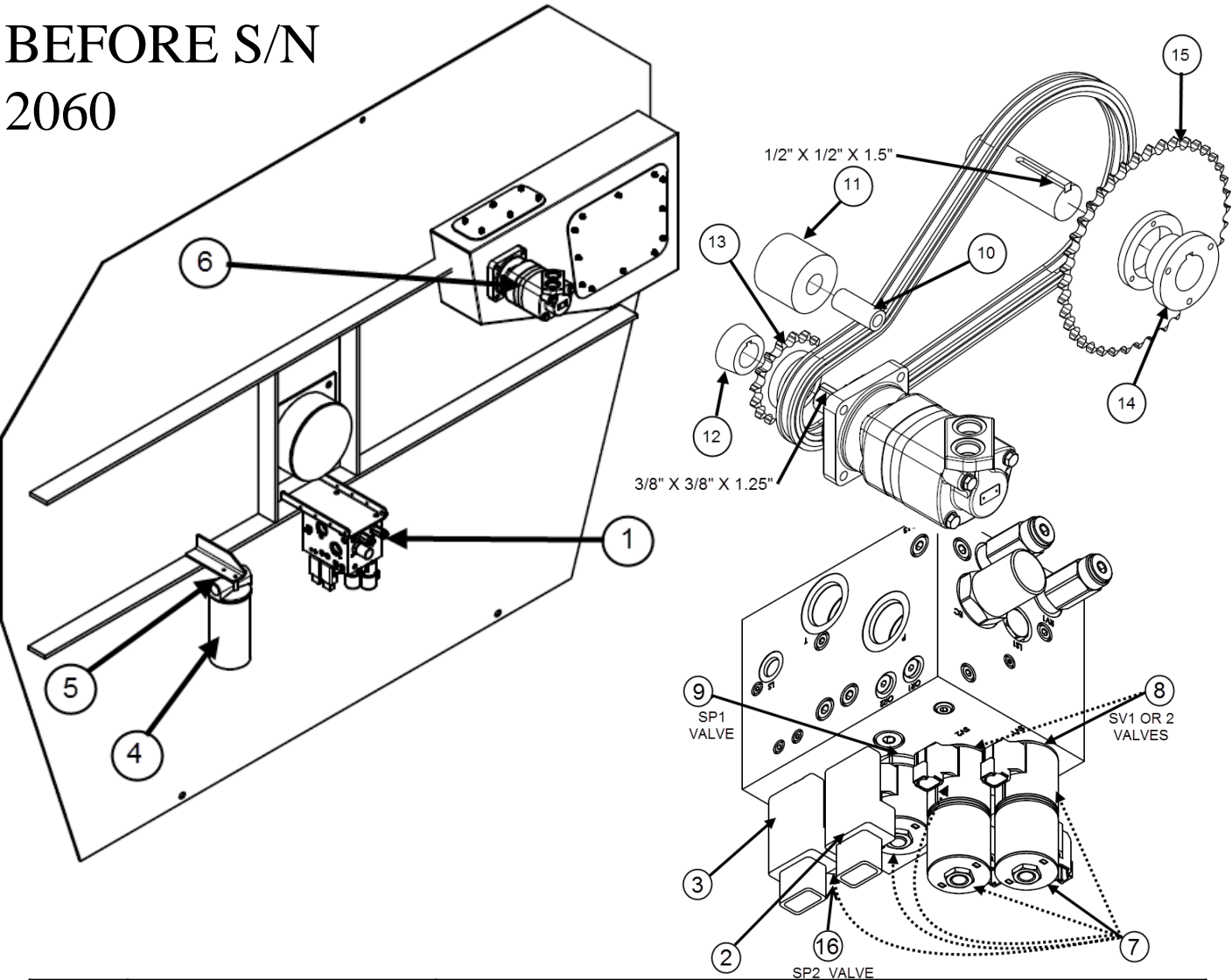




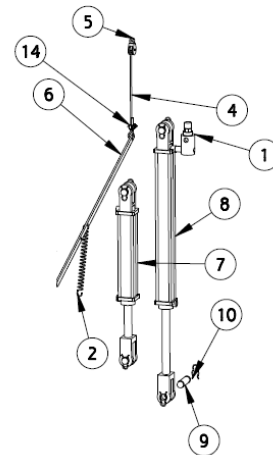
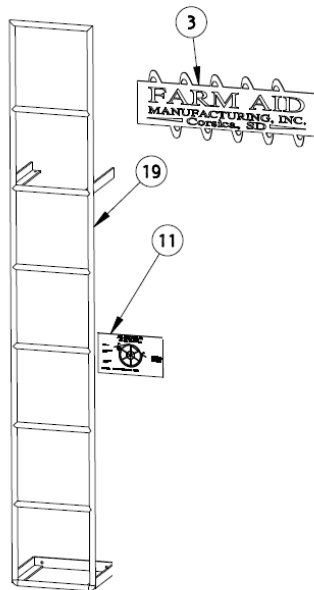
ITEM	PART NUMBER	DESCRIPTION
1	TK900-V-REV 1	Complete valve assembly ( <b>beginning in 2018, s/n &gt; 2060</b> )
	TK900-V	Complete valve assembly ( <b>before 2018, s/n 2060</b> )
2	TK900 COIL DIS 2.5"	Coil for elevator proportional valve 2.5" tall (1 per)
3	TK900REEL CONTROL	Plug in PWM controller to soft start and variable speed of reel and elevator
4	TK011-FILTER	Oil filter cartridge
5	TK011	Filter mount and cartridge
6	TK900-M-FAC	hydraulic motor for main drive on 680, 20 gpm
7	TK900-COIL	12V Coil for valve assembly, 5 per valve body (#6 IS 2.5" TALL)
8	TK900-VALVE UP/DN	Valve for door or elevator cylinder operation
9	TK O-RING ELEVATOR	O ring under the above valves. Approximately .96" OD .095" thick
9	TK900-VALVE PROP	Valve for controlling speed of Reel
	TK O-RING REEL	O ring under the above valve. Approximately 1.16" OD .116 thick
10	TK525B	Bushing for the FAC525 roller. 1.25 X 0.75 X 3.01
11	TK525	UHMW 3.5" roller
12	FA207H	2012 x 1 -1/2 <b>Note: Some built with sprockets that have keyed bores</b>
13	FAC230	8016 sprocket, 80-16T, taper lock, use with 2012 bushing
14	FAC2454	SF bushing for 2.188" shaft
15	TK80BT40	8040 sprocket for use with a QD SF bushing.
16	TK900 2018 VALVE	Elevator proportional valve



BEFORE S/N  
2060



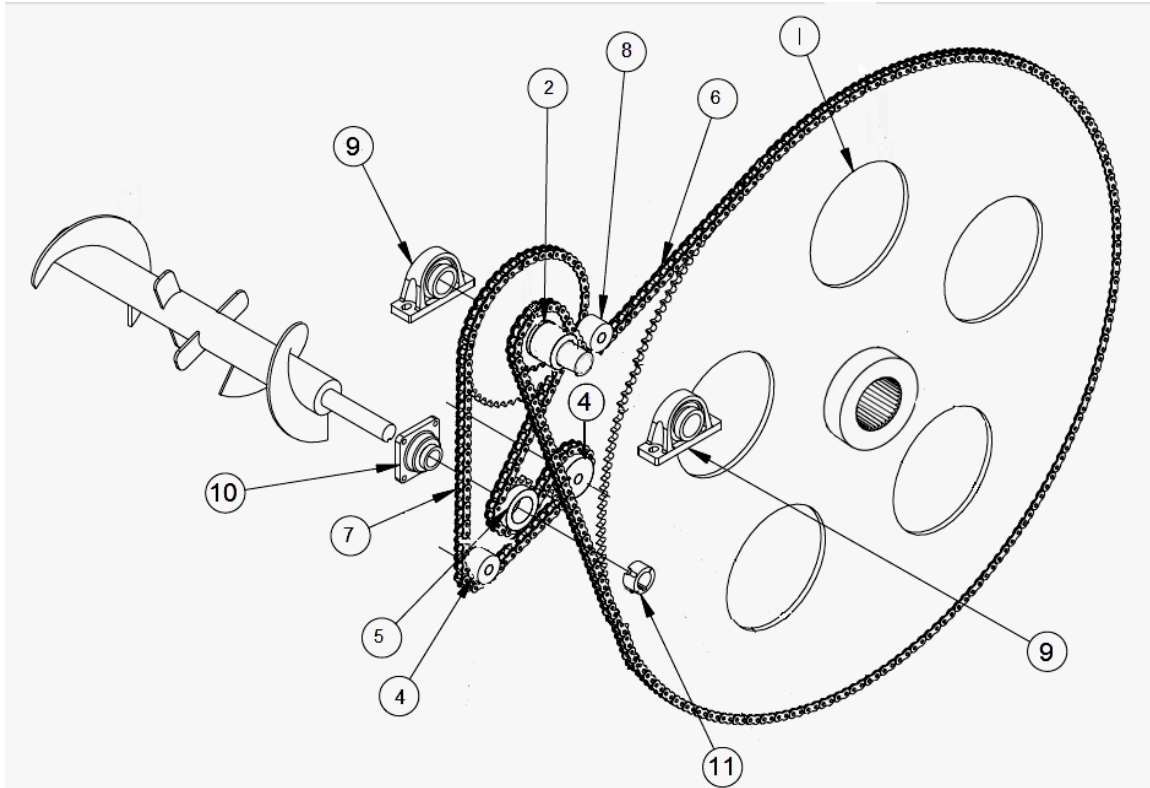
ITEM	PART NUMBER	DESCRIPTION
1	TK900-V	Complete valve assembly
2	TK900Reelcontrol	Plug in PWM controller to soft start and variable speed of reel
3	TK900Dischargecontrol	Plug in PWM controller to soft start and variable speed of elevator
4	TK011-FILTER	Oil filter cartridge
5	TK011	Filter mount and cartridge
6	TK900-M-FAC	hydraulic motor for main drive on 680, 20 gpm
7	TK900-COIL	12V Coil for valve assembly, 6 per valve body
8	TK900-VALVE UP/DN	Valve for door or elevator operation
	TK O-RING ELEVATOR	O ring under the above valves. Approximately .96" OD .095" thick
9	TK900-VALVE PROP REEL	Valve for controlling speed of Reel
	TK O-RING REEL	O ring under the above valves. Approximately 1.16" OD .116 thick
10	TKC525B	Bushing for the FAC525 roller. 1.25 X 0.75 X 3.01
11	TK525	UHMW 3.5" roller
12	FA207H	2012 x 1 -1/2 <b>Note: Some built with sprockets that have keyed bores</b>
13	FAC230	8016 sprocket, 80-16T, taper lock, use with 2012 bushing
14	TK8040 B	SF bushing for 2.188" shaft
15	TK8040	8040 sprocket for use with a QD SF bushing.
16	TK900-VALVE PROP REEL	Valve for controlling speed of Elevator
	TK O-RING ELEVATOR	O ring under the above valves. Approximately .96" OD .095" thick



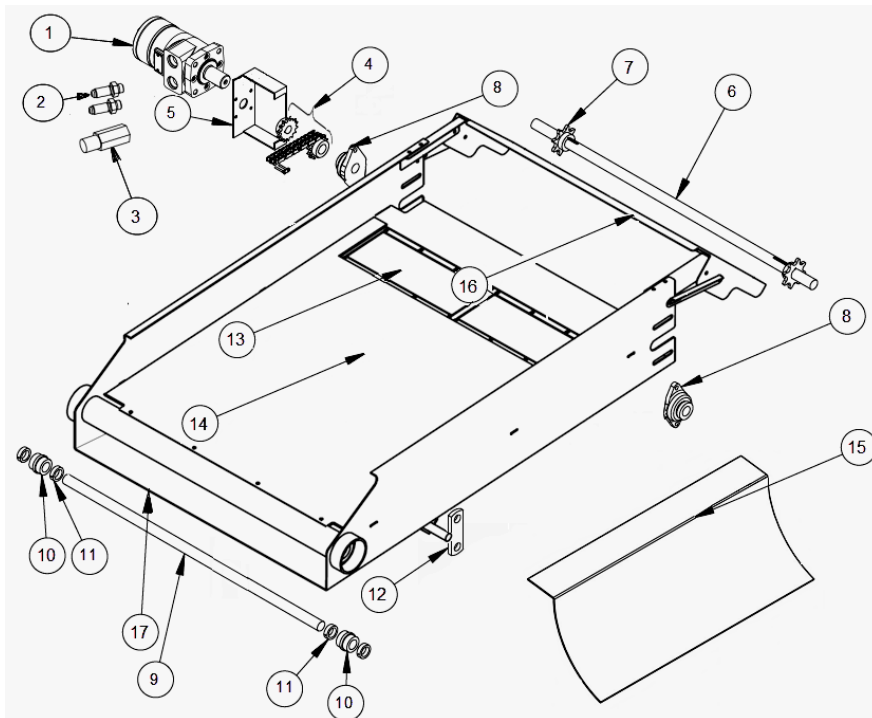
See Elevator Page

ITEM	PART NUMBER	DESCRIPTION
1	FA-020	Bypass Valve
2	FA-277	Spring, Door Indicator
3	FA-356	Decal, Farm Aid Equipment, Inc. Mfg
4	FA-541	Cable, Indicator Bar
5	FA-800	Pulley, Indicator Bar
6	FA-353-34	Door Indicator Bar, Model 560 & 680
7	TK-20-14	Hyd Cylinder, 2.00 Bore X 14.0 Stroke -- Repair Kit is FA639572
8	FA-20-24	Hyd Cylinder, 2.0 Bore X 24.0 Stroke -- Repair Kit is FA639572
9	FA-352P	Cylinder Pin
10	FA-352PC	Retainer, Cylinder Pin
11	FA-355L	Decal, Fill Level
14	FA-541C	Cable Clamp
19	FAC-090L	Ladder

**ASSY, 680 REAR DRIVE  
LEFT HAND DISCHARGE**

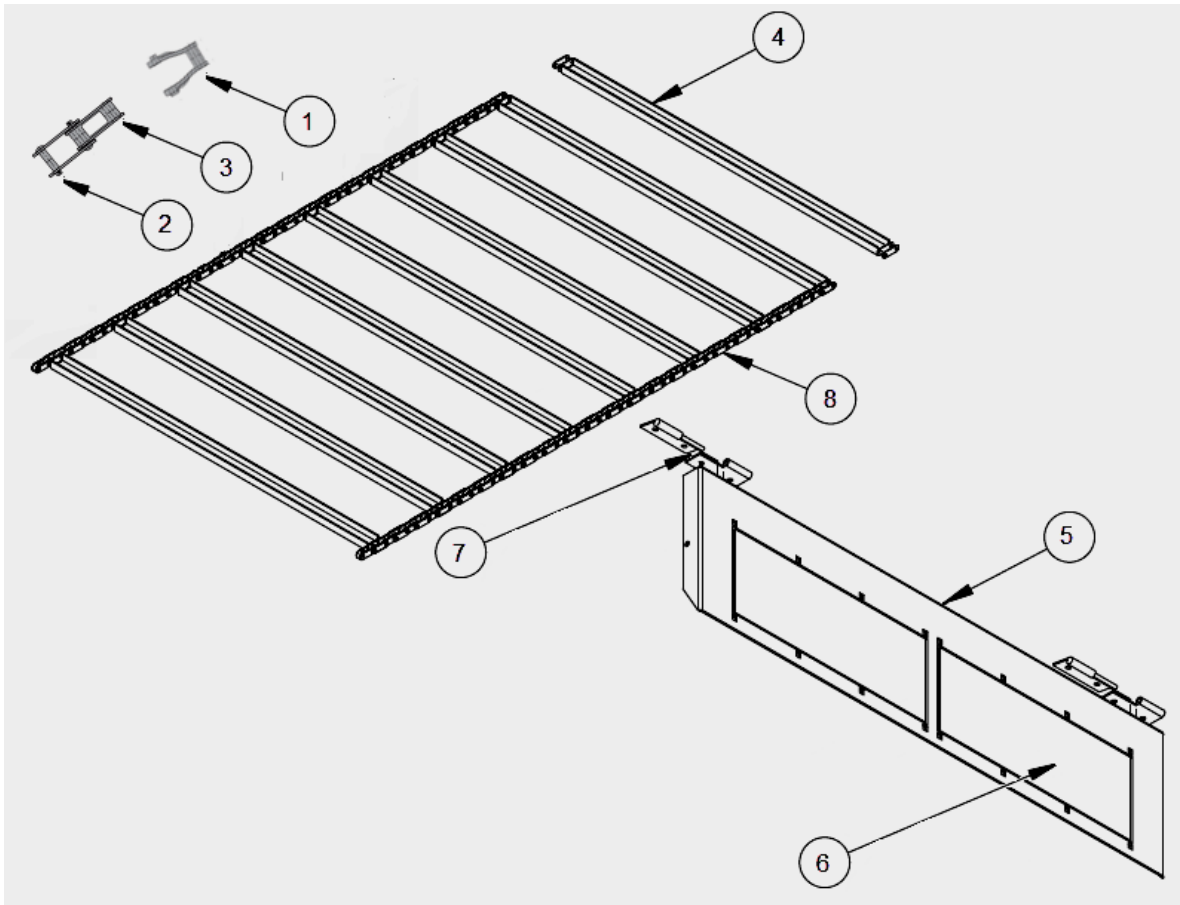


ITEM	PART NUMBER	DESCRIPTION
1	FAC174 SPLINED	Sprocket, 174T-120 SPLINE
2	FAC148	Sprocket Weldment, 48T & 16T
	SNAP RING 4.5	4.5" Snap Ring
4	FAC513	Poly Roller
5	FAC235	Sprocket, 16T-100, Taper Lock
6	FAC284-289	120 Chain, Rear Final Drive, 192 Rollers
7	FAC282-134	100 Chain, Rear Initial Drive, 108 Rollers
8	FAC347	Poly Idler Pulley, Rear
9	FA104PBSS	Pillow Block, 2-15/16 W/Bearing , Set Screw
10	FAC108FB4	Flange Brg, 4 Bolt, 2-3/16
11	FAC245H	2517 Taper Lock Bushing, 2-3/16

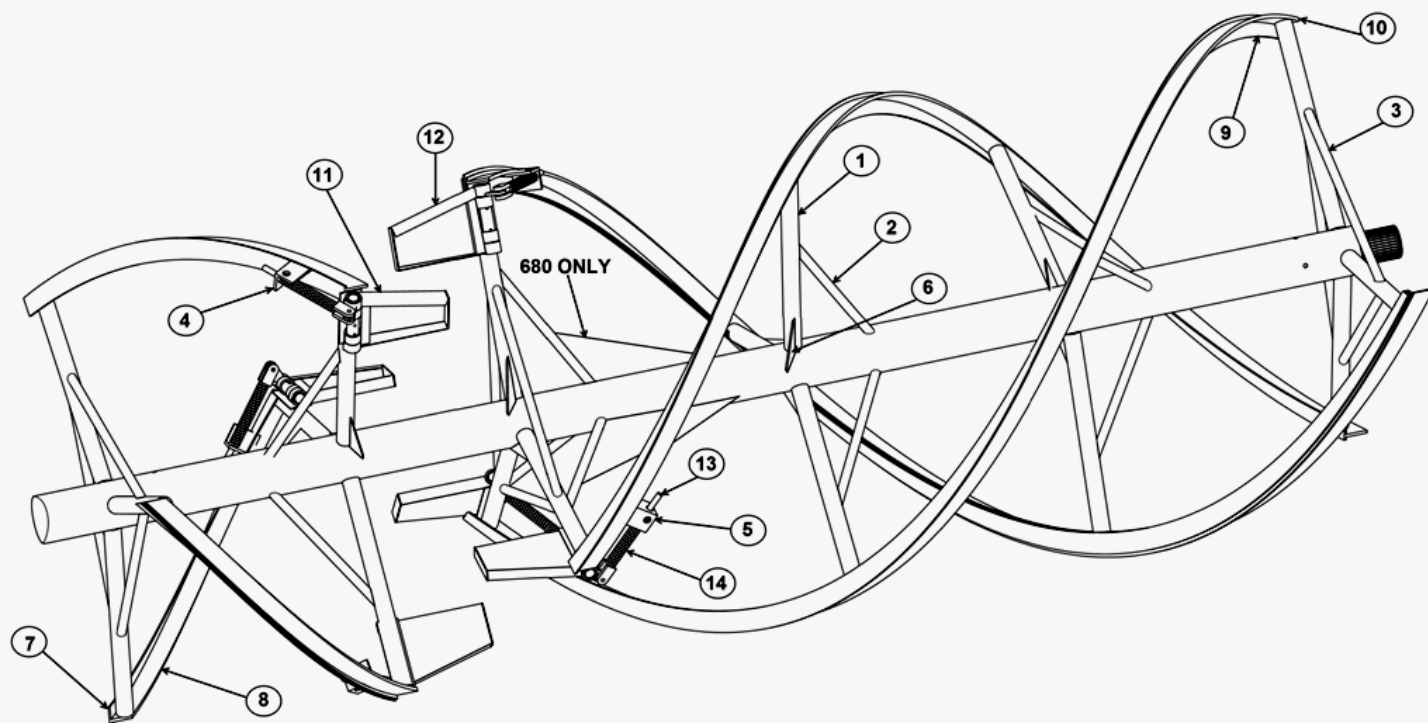


ITEM	PART NUMBER	DESCRIPTION
1	TK-509-2.80	Hydraulic Motor (Seal Kit FAC60540) This is a 2.8 CID. Earlier versions were 5.9 CID (Eaton 101-1011-009)
2	SAE10 TO JIC#6	#10 Male SAE to #6 Male JIC (Motor Hose Fitting)
3	FAC568	Check Valve (between hose and Pioneer Tips)
4	FAC529A	Hydraulic Drive Kit (Sprockets, Chain, and Link)
	FAC529#50C	#50 Double Chain and Connector only
5	FAC-518	Mount, Hydraulic Motor
6	FAC-511	Shaft, 1-1/4 X 46
7	FAC-555	Conveyor Sprocket, 755 X 1-1/4 Bore
8	FAC-101FB-2	Flange Bearing, 2-Bolt, 1-1/4 Bore W/Locking Collar
9	FAC-512	Driven Shaft, 1-1/4 X 42
10	FAC-513	Elevator Idler Roll
11	FAC-514	Set Collar, 1-1/4
12	FA-520	Connector Link, Cylinder
13	FAC748FLOOR MAG	Magnet (two required) (Started Fall 2018)
14	FAC545POLYFLOOR	Poly floor(Started Fall 2018)
15	FAC536ES	Elevator Saddle
16	FAC520EH	Elevator Hood with Brackets
16	FAC520HOOD	Elevator Hood Only
Not Shown	FAC350S	Unloading Door
<b>If a Magnet is Requested Please Add an "/M" Suffice</b>		
17	FAC-500-4	Elevator Weldment, 4 Ft. Includes Rollers and Shaft
	FAC-500-5	Elevator Weldment, 5 Ft. Includes Rollers and Shaft
	FAC-517-4	4' Elevator Complete, Less Motor and Mount
	FAC-517-5	5' Elevator Complete, Less Motor and Mount

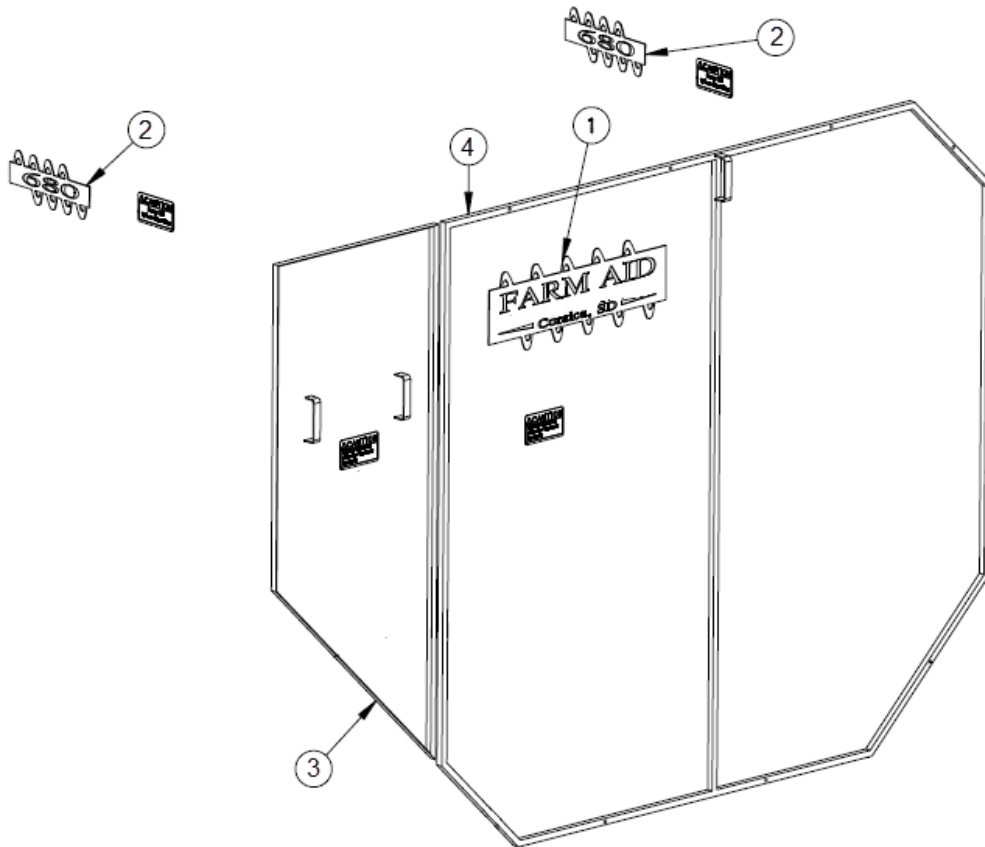
ELEVATOR



ITEM	PART NUMBER	DESCRIPTION
1	FAC515OS	Offset Connector (1/2 Link)
2	FAC515C	Connector
3	FAC510L	Link, Cast
4	FAC-515	Chain Slat With Links
5	FAC748	Break-Away Magnet Assembly With All Hardware
6	FAC748FLOOR MAG	Magnet (two required)
7	HINGE, MAGNET-Left Hand	Hinge For Breakaway Magnet, Left Hand Discharge. 2 Needed Shown above
	HINGE, MAGNET-Right Hand	Hinge For Breakaway Magnet, Left Hand Discharge. 2 Needed
8	FAC-516-4	Elevator Chain, 4 Ft.
	FAC-516-5	Elevator Chain, 5 Ft.

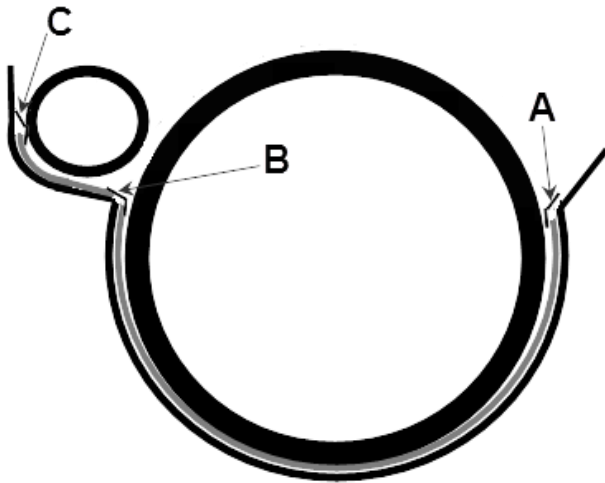


ITEM	PART NUMBER	DESCRIPTION
1	FAC-844	680 SPIRAL SPOKE, 3", 18 per
1	FAC-843	560 SPIRAL SPOKE 2 1/2", 18 per
2	FAC-844BP	680 SPOKE BRACE PIPE 2", 12 per
2	FA-819	560 SPOKE BRACE PIPE 1 1/4" x 27", 12 per
3	FAC-819-560	560 SPIRAL SUPPORT, 1 1/4" X 37", 9 per
3	FAC-819-680	680 SPIRAL SUPPORT, 1 1/4" X 41, 9 per"
4	FAC-333SRG-LONG	FRONT SPRING ROD GUIDE, 3 per
5	FAC-333SRG-SHORT	REAR SPRING ROD GUIDE, 3 per
6	FA-817	SPIRAL GUSSET , 15 per
7	FAC-705-FF-H	FRONT SPIRAL FACE WITH HOLES 680, 2 of 6' 8"
7	FAC-705-FF	FRONT SPIRAL FACE WITH OUT HOLES 680, 2 of 6' 8"
7	FAC-704-FF-H	FRONT SPIRAL FACE WITH HOLES 560, 2 of 6' 8"
7	FAC-704-FF	FRONT SPIRAL FACE WITHOUT HOLES 560, 2 of 6' 8"
8	FAC-705-FS	FRONT SPIRAL SUPPORT 680, 6 of 6' 8"
8	FAC-704-FS	FRONT SPIRAL SUPPORT 560, 6 of 6' 8"
9	FAC-705-BF-H	REAR SPIRAL FACE WITH HOLES 680, 2 of 20'
9	FAC-705-BF	REAR SPIRAL FACE WITHOUT HOLES 680, 2 of 20', 6 of 3', 3 of 18"
9	FAC-704-BF-H	REAR SPIRAL FACE WITH HOLES 560, 2 of 20'
9	FAC-704-BF	REAR SPIRAL FACE WITHOUT HOLES 560, 2 of 20', 6 of 3', 3 of 18"
10	FAC-705-BS	REAR SPIRAL SUPPORT 680, 6 of 20'
10	FAC-704-BS	REAR SPIRAL SUPPORT 560, 6 of 20'
---	FAC-706	SWEEP BELT 560 AND 680, uses up to (26) 5/16 X 1.5" bolts
11	FAC-333F	FRONT KICKER WITH PIVOT TUBE AND HARDWARE, 3 per
12	FAC-333R	REAR KICKER WITH PIVOT TUBE AND HARDWARE, 3 per
13	FA335SR	KICKER SPRING ROD, 6 per
14	FAC-332 REV 2	COMPRESSION SPRING, 3 per



ITEM	PART NUMBER	DESCRIPTION
1	FA-356	Decal, Farm Aid Equipment, Inc. Mfg
2	FA-360-560	Decal, 560
2	FA-360-680	Decal, 680
3	FAC-008A	Door Small Rear 680,Specify Left
4	FAC-006BA	Door Large Rear 680, Specify Left

STRIP CHART			
	A	B	C
front	FA7510	FA7610	FA7710
middle	FA7520	FA7620	FA7520
back	FA7530	FA7630	FA7530



	P / N	DESCRIPTION
	FAC736KL	POLY FLOOR LINER KIT, MODEL 680
	FAC736APL	POLY AUGER LINER KIT, MODEL 680
	FAC736-1L	FRONT POLY SHEET, MODEL 680
	FAC736-2L	2nd POLY SHEET, MODEL 680
	FAC736-3L	3rd POLY SHEET, MODEL 680
	FAC736-4L	BACK POLY SHEET, MODEL 680
	FA757	CARRIAGE BOLT (680-Qt 39 Auger 23)
	FA756B	ELEVATOR BOLT (680-Qt 64 Auger 7)
	FA755	5/16" TORX SCREW (680-Qt 31 Auger 30)